



## Introduction

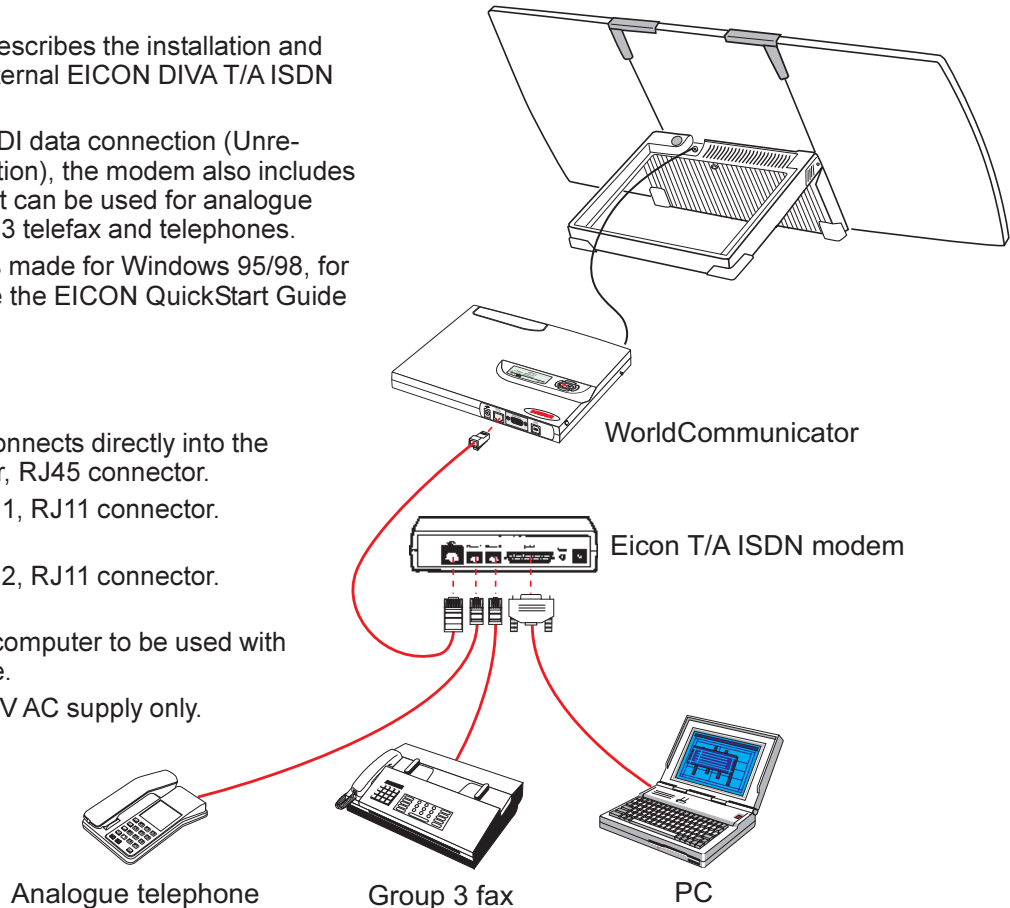
This application note describes the installation and configuration of the external EICON DIVA T/A ISDN modem.

Besides the 64 kbps UDI data connection (Unrestricted Digital Information), the modem also includes two analogue ports that can be used for analogue devices like modem, G3 telefax and telephones.

This application note is made for Windows 95/98, for Win NT installation see the EICON QuickStart Guide manual.

## Connections

- ISDN cable which connects directly into the WorldCommunicator, RJ45 connector.
- Analogue device no.1, RJ11 connector. Pin 3 & 4 used.
- Analogue device no.2, RJ11 connector. Pin 3 & 4 used.
- Serial cable for the computer to be used with 64 kbps data service.
- AC/DC adapter, 220V AC supply only.





## Installation

### WARNING Win 98 !

*It is very important to follow the steps, exactly as described below, to install the DIVA T/A software. The setup file for ISDN modems ( mdmisdn.inf ), supplied on the Microsoft Windows 98 CD, contains incorrect information about the DIVA T/A ISDN Modem (incorrectly referred as EICON T-A External). Using this set-up file will cause the DIVA T/A to operate incorrectly. DO NOT use the Add New Hardware applet (found in Control Panel) to install the DIVA T/A. Follow the steps exactly as described below to install the DIVA T/A.*

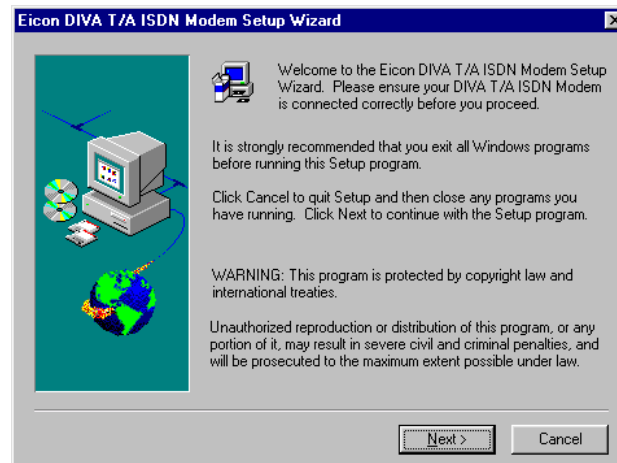
- 1** Switch on your PC with the DIVA T/A ISDN Modem powered on and the serial cable connected. Windows automatically detects the DIVA T/A . The “New Hardware Found “ window appears, followed by the “Add New Hardware Wizard”.
- 2** Insert the DIVA T/A CD into your PC’s CD drive.
- 3** In the “Add New Hardware Wizard” window, click “Next”.
- 4** Select “Search for the best driver for your device” and click “Next”.
- 5** Select “CD-ROM drive” and click “Next”. A window informing it found driver for “EICON DIVA

T-A ISDN Modem PnP” should then pop up.

**6** Click “Next” again and then click “Finish”. Windows will start.

**7** To start the DIVA T/A software installation, click “Start” and the “Run”. In the Run field, enter d:\SETUP.EXE (where d: is the CD drive).

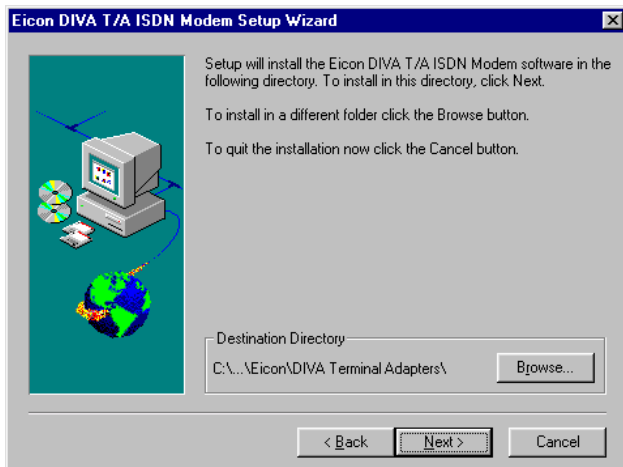
**8** In the “EICON DIVA Terminal Adapters-CD Set-up” window, select “Install”. The following window will appear:



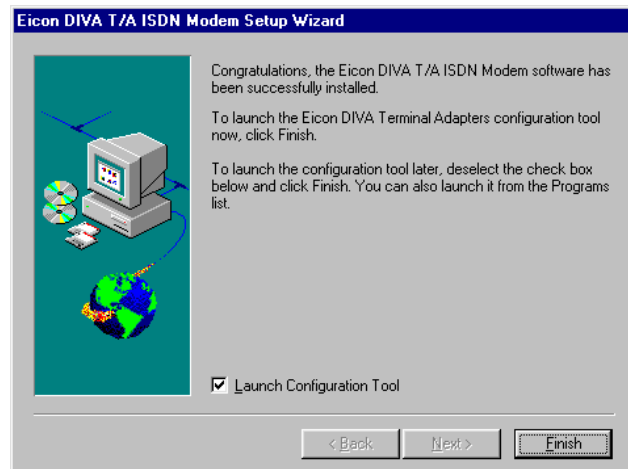
**9** Click “Next”.



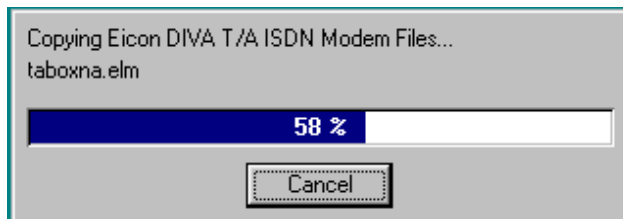
**10** Select the destination directory where the SW should be installed (default is recommended) and click "Next".



**12** You have now finished the installation and are ready to start configuration of the modem. Make sure that the "Launch Configuration Tool" check box is enabled and click "Finish".

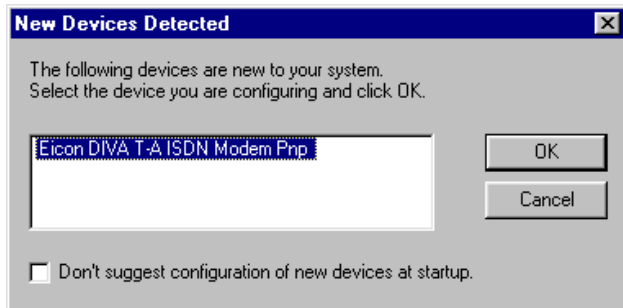


**11** It will now start copying files to your computer.

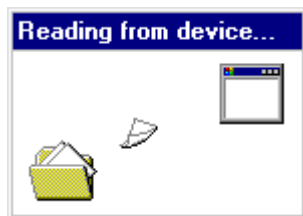




**13** The "New Devices Detected" window appears. Click the "EICON DIVA T-A ISDN Modem PnP" and then click "OK".

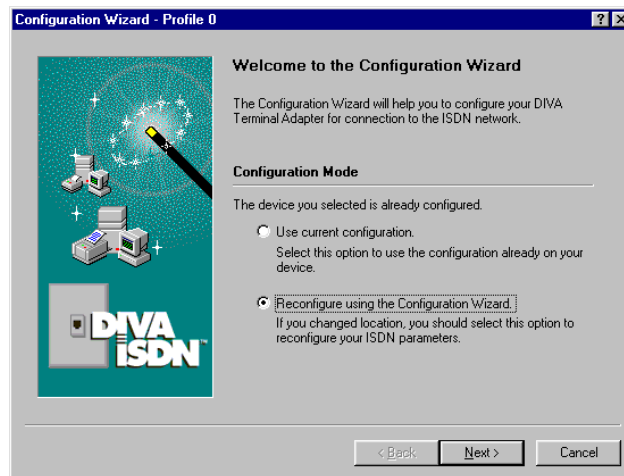


**14** The program will read the configuration installed on the modem and the window shown below will appear.



**15** In the "Profile" window, choose "Reconfigure using..." and click "Next".

(If the modem has been configured previously, the picture may differ slightly.)

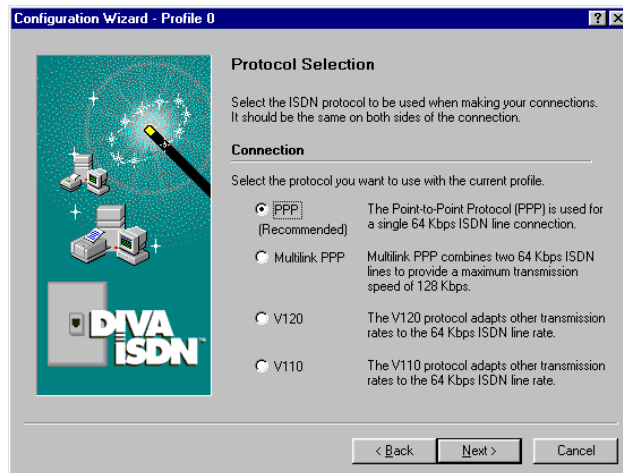
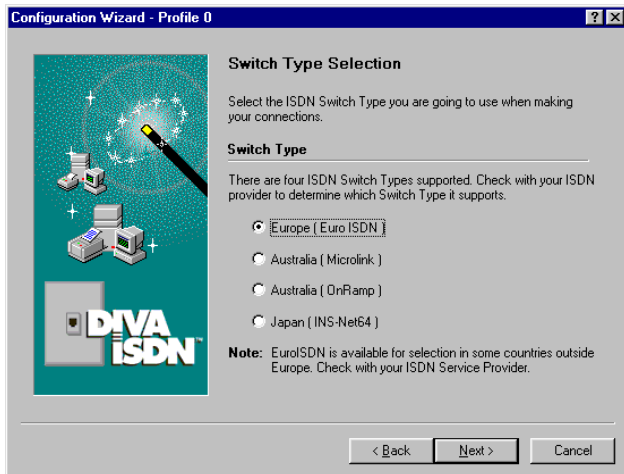




**16** Choose ISDN Switch Type “Europe (Euro ISDN)” and click “Next”.

Note that the NI-1 switch type is not supported. The NWC must therefore also be set to Euro ISDN (this is set as default on the NWC).

**17** Select “PPP” protocol and click “Next”





**18** You are now going to set up the telephone numbers for the two analogue ports. For use of two analogue devices, make sure to enter “2” in the “Numbers to be used with this device”.

*In this example we have set the following:*

Phone Port no.1 MSN 30\*, a telephone going out on a 64 kbps speech channel.

Phone Port no.2 MSN 40, a fax/modem going out on a 3.1 kHz channel.

\* Use MSN 20 for low cost 4.8 kbps voice service.

Note that when in the wizard it says “ISDN Phone Number 1”, it actually means telephone port 1 on the the EICON DIVA connector panel.

Make sure that you connect the analogue devices to the correct port.

**19** Select geographical region and click “Next”.

**Configuration Wizard - Profile 0**

### Configure ISDN Numbers

Your ISDN Numbers are very important and you should ensure you type them correctly.

Your ISDN Number is assigned by your ISDN Service Provider and is used by the DIVA Terminal Adapter to identify itself on outgoing calls and to recognize incoming calls which are destined for it.

**Numbers Assigned**

Numbers to be used with this device:

ISDN Phone Number 1:

ISDN Phone Number 2:

< Back   Next >   Cancel

**Configuration Wizard - Profile 0**

### Select Geographical Region

To configure your DIVA T/A ISDN Modem phone lines correctly, you should select the country you are calling from.

With this option configured, the DIVA T/A ISDN Modem can implement the correct ring pattern for the country you are in.

**Geographical Region**

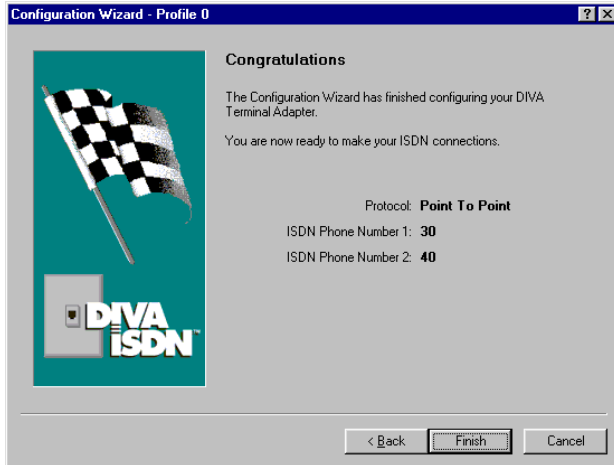
Specify the geographical region from where you are phoning. If your country is not listed, use the default International.

Geographical region:

< Back   Next >   Cancel



**20** Verify that your programming is correct. Note that the ISDN telephone numbers have nothing to do with your data connection from the computer. This will go out as a 64 kbps UDI service on the NWC anyway. Click "Finish".



**21** The PC will now write and save the configuration into the modem.



**22** Choose whether you want "Show tips at startup" and click "Close".

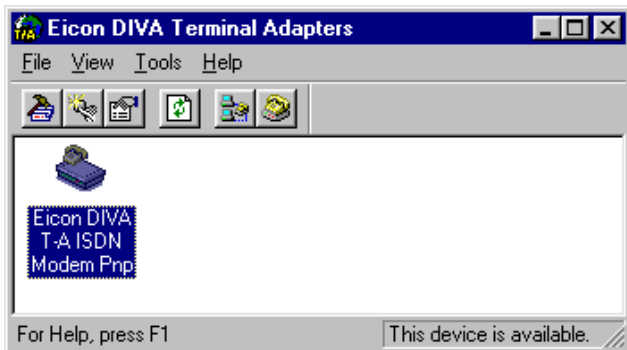




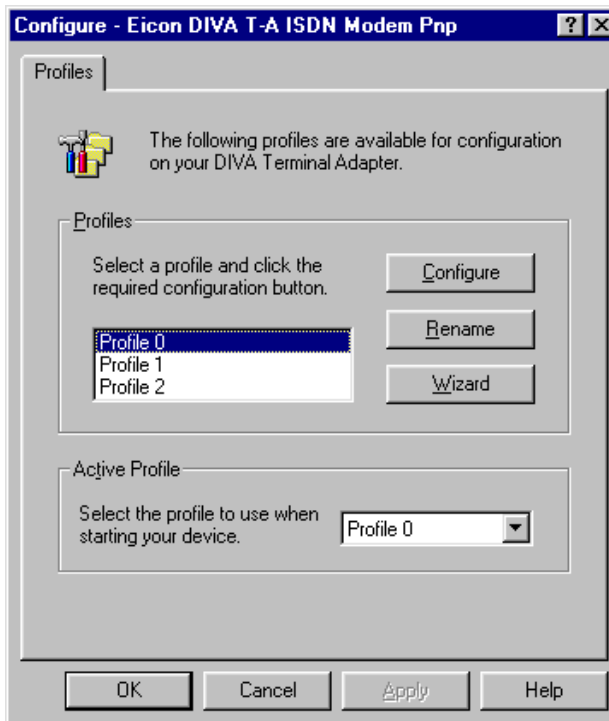
**23** The window below will now appear. Double-click the “EICON DIVA T-A ISDN Modem PnP” icon to finish the rest of the configuration.

*If you want to reconfigure the modem later you can reach this window in two ways:*

- go to “Start”, “Settings” and “Control Panel” and double click on the EICON icon,
- or you can go to “Start”, “Programs”, “EICON DIVA T-A ISDN Modem” and “EICON DIVA Terminal Adapters”.



**24** Select “Profile 0” and click “Configure”.







**25** You MUST enable a telephone port if connecting an analogue fax or modem.

For **Phone 1** and/or **Phone 2**, check as required:

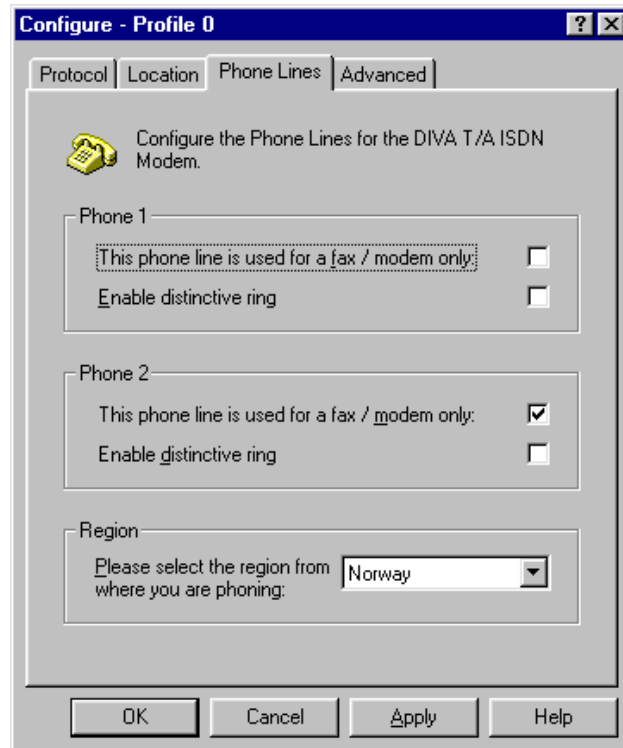
**"This phone line is used for a fax/modem only"**

If a telephone is to be connected this should not be enabled.

*The window setting are consistent with our example (see step 18):*

- a telephone phone port no.1, and
- a fax on phone port no.2.

Click "OK".





**26** It will now write and save the configuration into the modem.



**27** Verify that the modem has been installed by clicking “Start”, “Settings”, “Control Panel” and “Modems”.

### Testing

Connect the telephone and fax to the EICON DIVA modem and test that it works satisfactory.

The PC can be tested using the Windows “Dial Up Connection”.

For more detailed information about installing and using the EICON DIVA T/A ISDN Modem, see the manual.

You can also see the online DIVA T/A User’s Guide, Reference Guide or Release Notes by running the SETUP.EXE file on the EICON DIVA CD-ROM.

